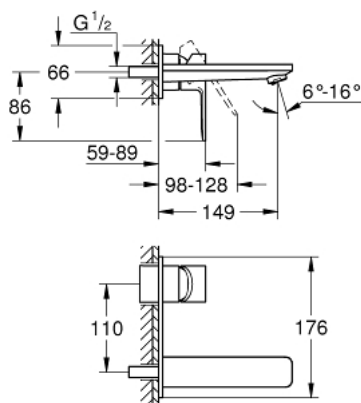


## 19 409 DC1 LINEARE 2-HOLE BASIN MIXER M-SIZE



### PRODUCT DESCRIPTION

- Colour: Supersteel
- wall mounted
- final installation set for
- 23 571 000 / 32 635 000
- without concealed body
- metal escutcheon
- metal lever
- GROHE Long-Life finish
- GROHE Water Saving - Less water, perfect flow
- maximum flow rate (at 3 bar): 5 l/min
- GROHE AquaGuide adjustable mousseur
- centre distance 110 mm
- projection 149 mm
- minimum pressure 1,0 bar