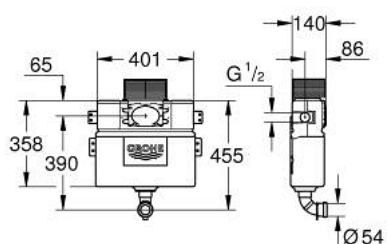


## 38 422 000 FLUSHING CISTERN FOR WC



### PRODUCT DESCRIPTION

- 6 - 9 l adjustable
- concealed installation
- 0.82 m installation height
- dual flush discharge valve, pneumatic
- front or top actuation
- water supply from left/right or top
- low noise (group I acc. to German Noise Specification)
- insulated against condensation
- 415 x 140 x 360 mm
- 1/2" water supply connection
- fixing brackets
- flush pipe
- inspection shaft with protecting block
- without wall plate/actuation
- GROHE Water Saving - Less water, perfect flow
- for mounting of small flush plates please order revision shaft 40 950 000 (sold separately)