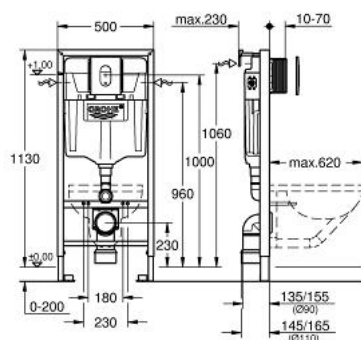


## 38 911 000 5-IN-1 SET FOR WC, 1.13 M INSTALLATION HEIGHT



### PRODUCT DESCRIPTION (1/2)

- with flushing cistern GD 2, 6 - 9 l
- 1.13 m installation height
- for on-the-wall installations or studded walls
- powder coated steel frame, self-supporting
- for dry-cladding, completely pre-assembled
- with fixed connections
- quick adjustment, lockable
- fixing material
- TÜV approved
- 2 WC fixing bolts
- fixing device for ceramic
- WC ceramics with small bearing area (less than 205 mm) require additional accessory 38 779 000
- distance of fixing bolts 180/230 mm
- outlet bend Ø 90 mm
- depth adjustable
- reducer Ø 90/110 mm
- inlet and outlet connecting set
- flushing cistern GD 2, 6 - 9 l
- adjustment ex factory 6l and 3l
- pneumatic discharge valve offering 3 modes of operation: dual flush or start/stop or single flush
- water supply from left/right or back
- low noise (group I acc. to German Noise Specification)
- insulated against condensation
- ½" water supply connection including integrated angle valve and push fit flexible hose union
- no tools required for the installation of the inspection shaft incl. protection during construction phase
- for vertical or horizontal use
- accessories for on-the-wall installation
- with GROHE Fresh retrofit set
- for chlorine-free tabs only

Pure Freude  
an Wasser



## 38 911 000 **5-IN-1 SET FOR WC, 1.13 M INSTALLATION HEIGHT**

### **PRODUCT DESCRIPTION (2/2)**

- including wall plate Arena Cosmopolitan
- vertical and horizontal installation
- 156 x 197 mm
- chrome
- made of ABS
- GROHE Long-Life finish
- including WC set for noise protection (37 131 000)